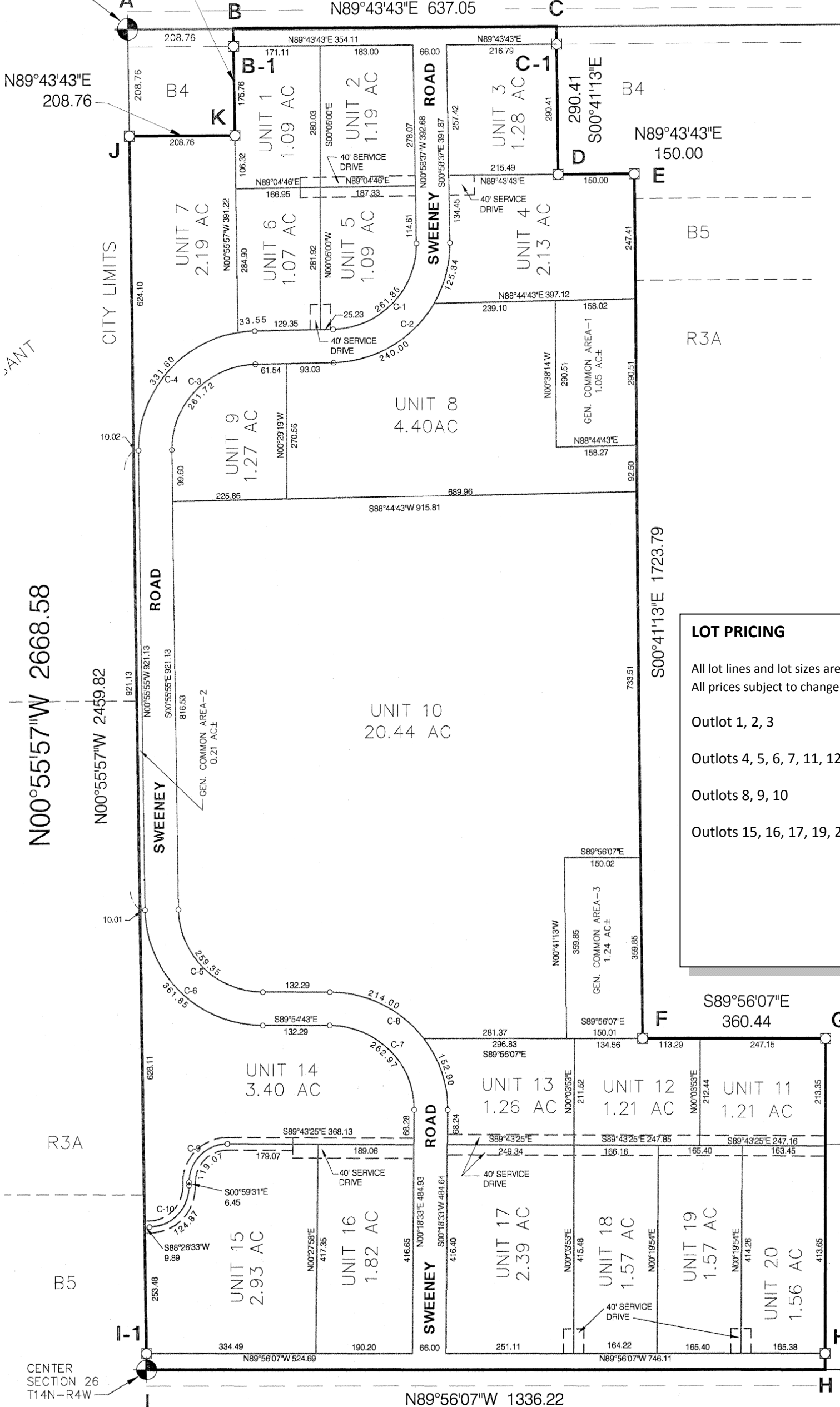


CITY OF MT. PLEASANT

BROOMFIELD ROAD

N89°43'43"

N 1/4 CORNER SECTION 26 T14N-R4W



LOT PRICING	
All lot lines and lot sizes are subject to change upon need. All prices subject to change without notice.	
Outlot 1, 2, 3	\$400,000/acre
Outlots 4, 5, 6, 7, 11, 12, 13, 14	\$250,000/acre
Outlots 8, 9, 10	\$100,000/acre
Outlots 15, 16, 17, 19, 20	\$600,000/acre
	01.08

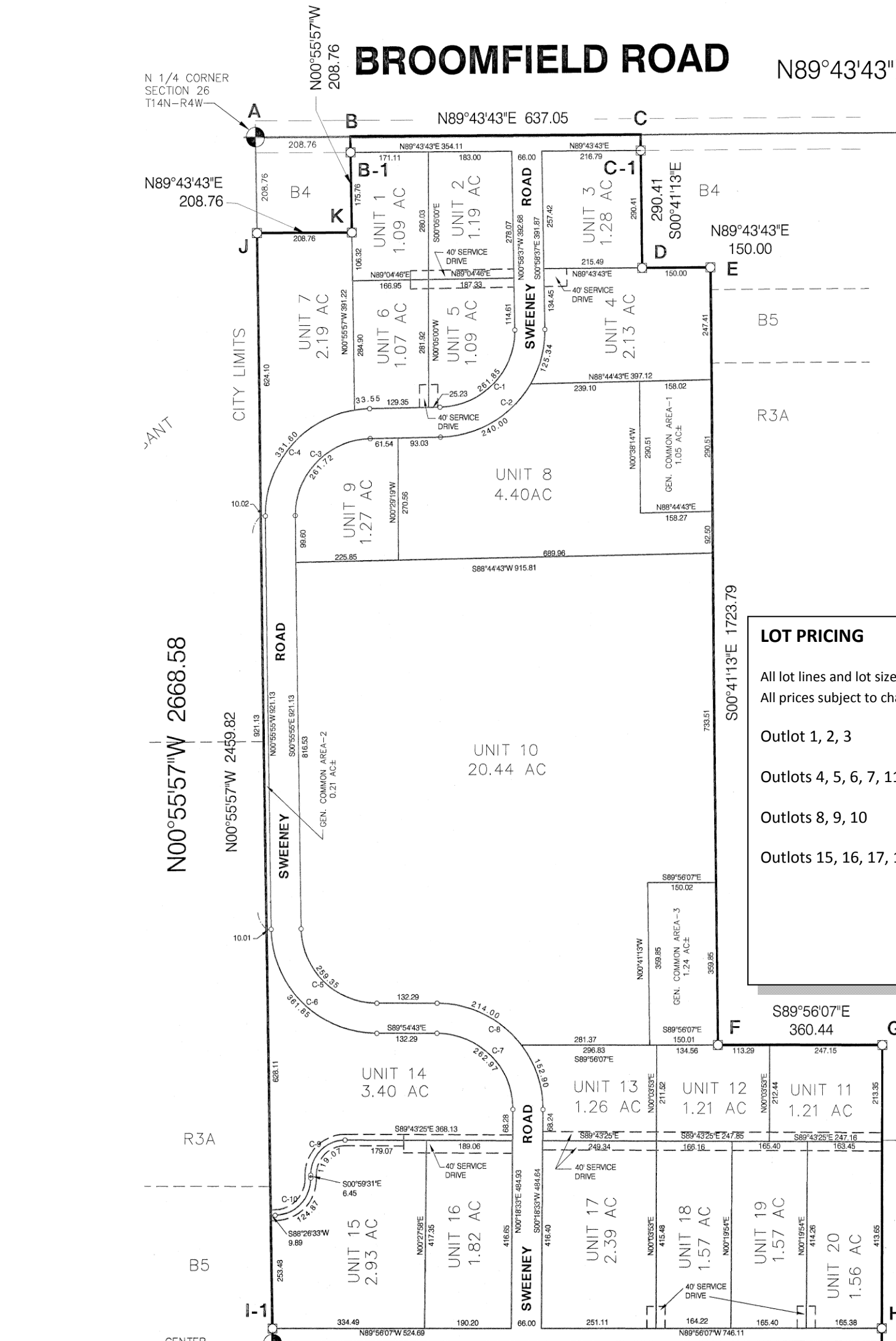
CENTER SECTION 26 T14N-R4W

BLUEGRASS ROAD

N89°56'07"

N89°56'07"W 1336.22

CITY OF MT. PLEASANT



LOT PRICING	
All lot lines and lot sizes are subject to change upon need. All prices subject to change without notice.	
Outlot 1, 2, 3	\$400,000/acre
Outlots 4, 5, 6, 7, 11, 12, 13, 14	\$250,000/acre
Outlots 8, 9, 10	\$100,000/acre
Outlots 15, 16, 17, 19, 20	\$600,000/acre
01.08	

